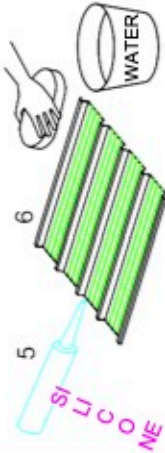




**kadra**  
access engineering

### TECHNICAL NOTES:

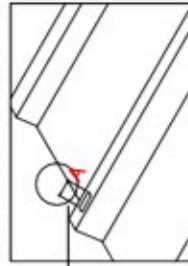
1. PROTECT SHEETS FROM SUN AND RAIN
  2. INSTALL SHEETS WITH UV PROTECTION OUTWARDS
  3. DON'T WALK ON PC SHEETS
  4. DON'T WALK DIRECTLY ON THE PANELS DURING BOTH INSTALLATION AND MAINTENANCE. TO ACCESS THE ROOF USING SUITABLE RUNWAYS
  5. USE ONLY NEUTRAL SILICONE
  6. FOR CLEANING USE ONLY WATER AND NEUTRAL DETERGENT
- POLYCARBONATE CAN BE DAMAGED BY SOME CHEMICAL PRODUCTS, SO:



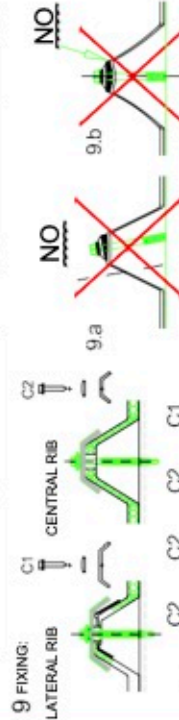
SHEETS ARE PRODUCED ON THE REQUIRED LENGTH WITH THERMOSEALED HEADS



DRILL: 8. DRILL ON SITE WITH SUITABLE DRILL BITS. MAKE HOLES IN THE SHEETS ACCORDING TO NEXT TABLE.

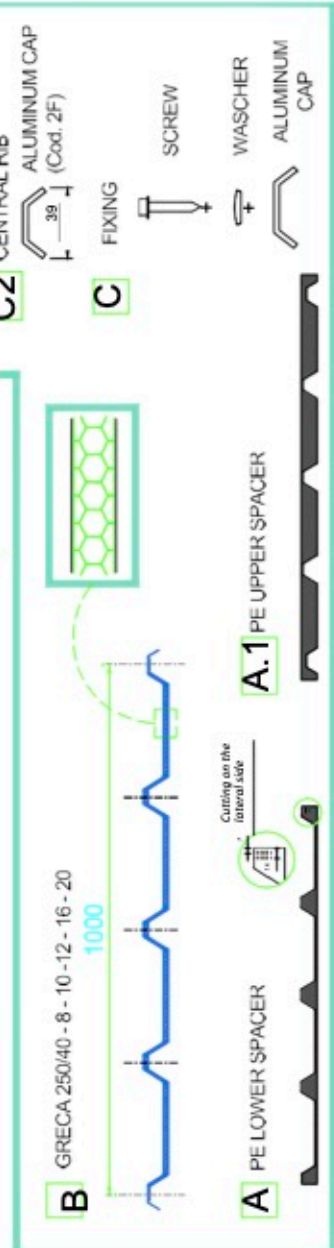
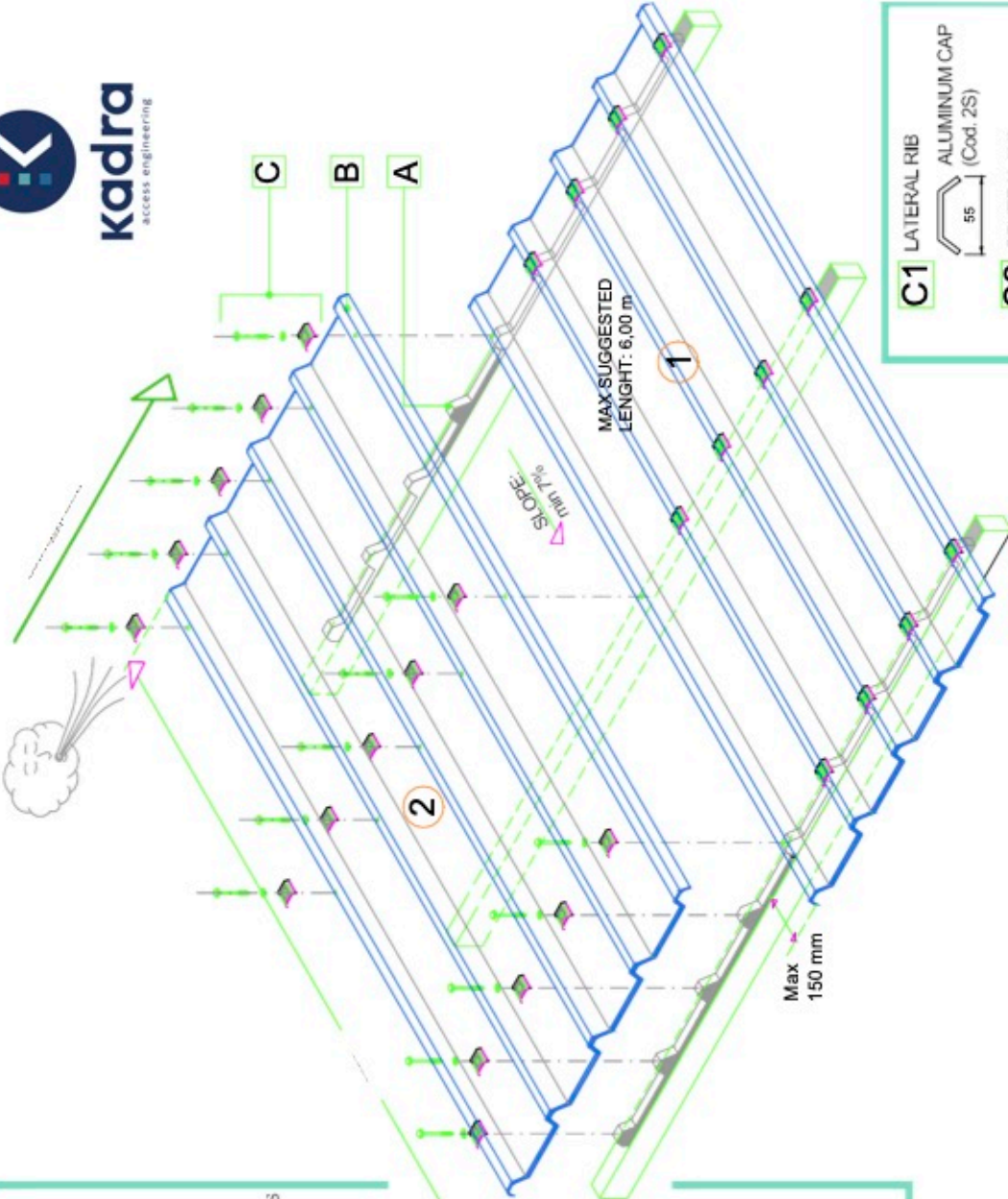


Panel length	Hole - Asolatura	Slot hole A
mm	mm	mm
L ≤ 2000	10	10
2000 < L ≤ 4000	14	14
4000 < L ≤ 6000	18	18
L > 6000	18 + 2,6 mm/m	



- 9.a. FIXING HAS TO BE ALWAYS PERPENDICULAR TO THE SHEET
- 9.b. DON'T TIGHTEN TOO MUCH THE SCREWS TO AVOID DAMAGING THE SHEETS.

10. PLEASE CONSULT OUR TECHNICAL DOCUMENTATION FOR LOAD RESISTANCE AND MAXIMUM SHEET LENGTH.



Cutting on the lateral side

A.1 PE UPPER SPACER

A PE LOWER SPACER

B GRECA 250/40 - 8 - 10 - 12 - 16 - 20

C1 LATERAL RIB

C2 CENTRAL RIB

C FIXING

SCREW

WASCHER

ALUMINIUM CAP

ALUMINIUM CAP (Cod. 2S)

ALUMINIUM CAP (Cod. 2F)

MAX SUGGESTED LENGTH: 6,00 m

Max 150 mm

1000